

# HCR SERIES

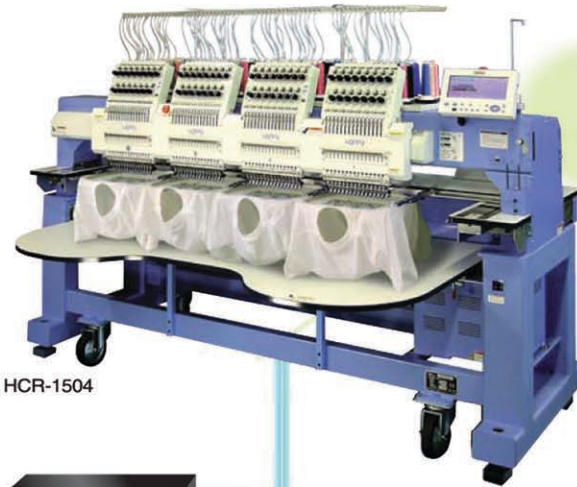
Computerized Embroidery Machine



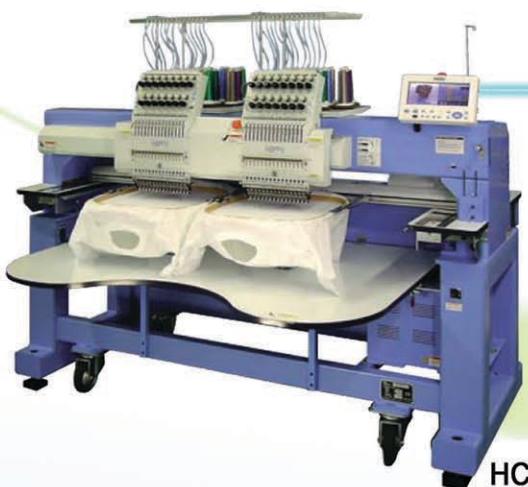
MODEL: HCR-1506-45

# HCR SERIES

MADE IN JAPAN



HCR-1504



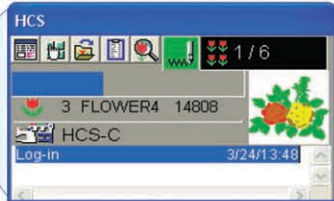
HCR-1502



HUB



Happy LAN Monitoring Window



## Media Compatibility



- Storage Media**
- Compact Flash
  - SD Card
  - Memory Stick
  - Smart Media
  - USB (Jump) Drive
  - (Optional) Floppy Disk drive



- PC Connection Ports**
- Ethernet (LAN) Port
  - USB Port
  - Serial Port

## HAPPY HCR Machines are Office-Friendly

- While HAPPY HCR Multi-head machines are built for big production and high durability, they're were also designed to be easy to work with:
- New color control panel with built-in help makes the machine easy to learn, and simplifies operations and maintenance
  - Quieter, smoother operation - the quietest HAPPY multi-head line ever
  - Compact design allows even the largest model HCR to be wheeled easily through a standard 3' door. More flexibility for your shop!

## Design Trace

HCR makes spotting and fitting designs into hoops easy with these key features:

- Optional Laser Marker**
- Displays sew point on the garment for accurate trace
  - Spot actual sewing location on garment with confidence



## Narrow Cylinder Arm



## FREE communication software included!

**HAPPYLINK:** Design transfer/management software for direct connection to PC via USB or serial.

**HAPPYLAN:** Allows you to control a network of HAPPY machines (of mixed types) at the same time



HCR-1506



HCD-1501

## Memory Capacity

Built-in memory capacity of 2,000,000 stitches or up to 250 multi-color designs and their custom settings

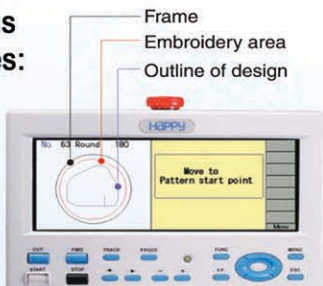
## New Thread Control System

The thread break sensor and the thread tension control unit are combined, improving upper thread feed and tension control.

Independent take-up springs improve overall sewing quality

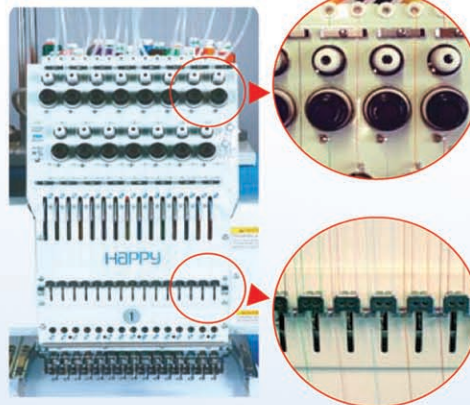
Control panel settings allow the machine to better handle different types of thread sewing together on the same design i.e. metallic + polyester, or other combinations.

Signatures:



### Frame Selection Menu

- Choose a hoop on-screen
- Accurately check/adjust design fit and position in the selected hoop

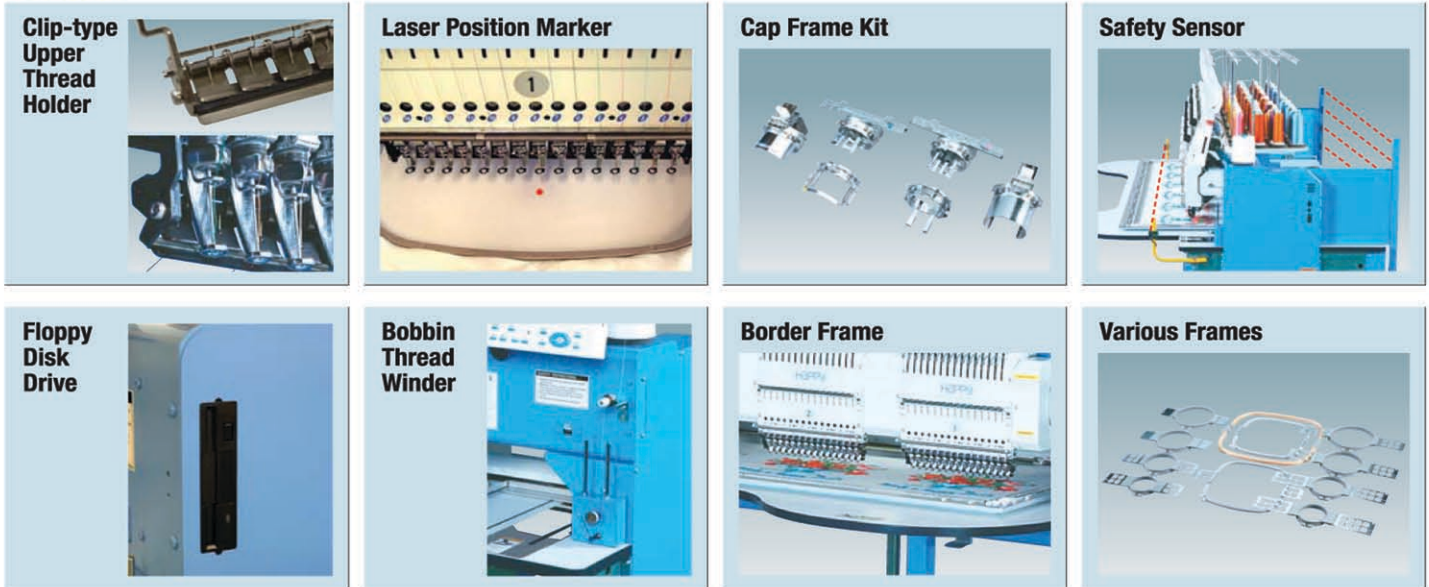


## Standard Features & Functions

- On-Board Help Feature
- WIDE (9inch) Color LCD Monitor
- HAPPY LINK Software
- HAPPY LAN Software (networking)
- Automatic Color Change
- Compatible with Many Types of Storage Media
- Make Design Adjustments On-The-Spot: flip/rotate, auto-repeat, fine-scaling, offset from center, and more
- Improve sewing quality of existing designs with design cleanup/compensation tools
- Improved production power: higher speed operation, fast color change

Reduced diameter of cylinder arm improves the ability to embroider on traditionally tight areas such as pockets, sleeves, pant legs, children's wear and more.

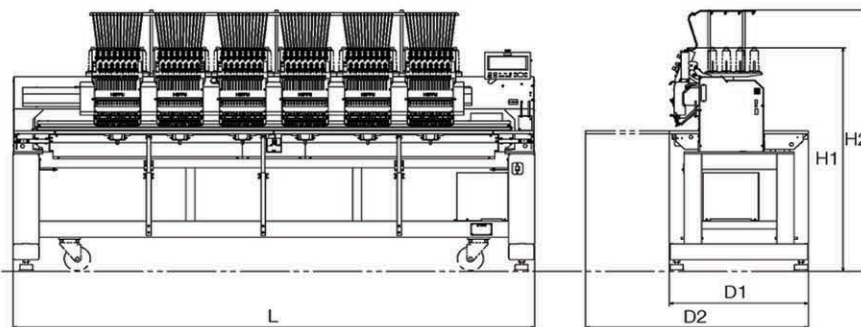
## Options



## HCR Series Specifications

Model	Head	Needles	Needle Distance (mm)	Embroidery Area per Head (DxW : mm)				Maximum Speed (r.p.m.)	
				Normal	Tubular Frame	Wide Cap Frame	Low-profile Cap Frame	Normal Tubular	Cap
HCR-1502	2	15	500	450x500	440x420	80x350	70x180	1,100	850
HCR-1504	4		360	450x360	320x320			1,000	
HCR-X1504	4		500	450x500	440x420			800	
HCR-1506	6		360	450x360	320x320				
HCR-X1506	6		500	450x500	440x420				
HCR-1508	8		360	450x360	320x320			750	

Model	Stitch Length (mm)	Memory	Power Supply	Power Consumption	Frequency	Weight (kg) Net/Gross	Dimensions (mm)				
							L	D1	D2	H1	H2
HCR-1502	0.1~12.7	2,000,000 stitches 250 patterns	Single Phase 200~240V	0.7kw	50/60Hz	610/800	1,890	800	1,285	1,340	1,580
HCR-1504				0.8kw		640/830	2,280				
HCR-X1504				1.0kw		890/1,140	3,000				
HCR-1506				1.0kw		930/1,200	3,980				
HCR-X1506				1.0kw		960/1,300					
HCR-1508				1.2kw		1,030/1,350					



• Effective embroidery area and maximum speed may vary depending on frame type and size set on machine, design and setting of machine.  
• Specifications subject to change without prior notice.

For more Information, Contact



Your One-Stop Shop  
for All Your Embroidery Needs!

Headquarters

3001 Stafford Drive  
Charlotte, NC 28208  
TOLL-FREE 877.335.5206  
Direct 704.394.0314  
Fax 704.392.1621  
website [www.happyemb.com](http://www.happyemb.com)