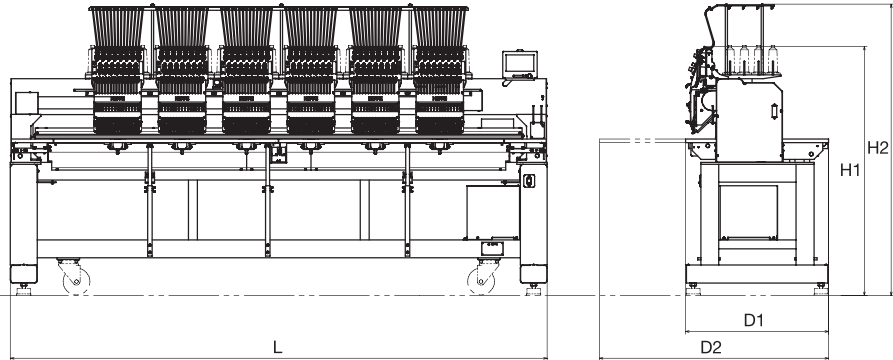


HCR2 Series Specifications

Model	Head	Needles	Needle Distance	Embroidery Area per Head (DxW)				Maximum Speed (r.p.m)	
				Normal	Tubular Frame	Wide Cap Frame	Low-profile Cap Frame	Normal Tubular	Cap
HCR2-1502	2	15	500mm 19.7inch	450x500mm 17.7x19.7inch	420x440mm 16.5x17.3inch	80x360mm 3.1x14.2inch	70x180mm 2.8x7.1inch	1,100	850
HCR2-1504	4		360mm 14.2inch	450x360mm 17.7x14.2inch	320x320mm 12.6x12.6inch			1,000	800
HCR2-X1504	4		500mm 19.7inch	450x500mm 17.7x19.7inch	420x440mm 16.5x17.3inch				
HCR2-1506	6		360mm 14.2inch	450x360mm 17.7x14.2inch	320x320mm 12.6x12.6inch				
HCR2-X1506	6		500mm 19.7inch	450x500mm 17.7x19.7inch	420x440mm 16.5x17.3inch				
HCR2-1508	8		360mm 14.2inch	450x360mm 17.7x14.2inch	320x320mm 12.6x12.6inch			750	

Model	Stitch Length	Memory	Power Supply	Power Consumption Typical-Max	Frequency	Weight	Dimensions				
							L	D1	D2	H1	H2
HCR2-1502	0.1~12.7mm 0.004~0.5inch	40,000,000 stitches 250 patterns	Single Phase 200-240V	170-550w	50/60Hz	480kg 1,058lb	1,890mm 74.4inch	800mm 31.5inch	1,285mm 50.6inch	1,340mm 52.8inch	1,580mm 62.2inch
HCR2-1504				190-650w		560kg 1,235lb	2,280mm 89.8inch				
HCR2-X1504						800kg 1,764lb	3,000mm 118.1inch				
HCR2-1506				200-770w		840kg 1,852lb	3,980mm 156.7inch				
HCR2-X1506						1,030kg 2,271lb					
HCR2-1508				220-880w		1,070kg 2,359lb					



NOTE
●Embroidery area may be limited by hoops to be used. ●Specifications are subject to change without notice. ●Maximum speed may change by sewing conditions.

Manufactured by:

 **HAPPY Industrial Corporation**
TOKYO OFFICE: 2-9-5 TAITO, TAITO-KU, TOKYO, 110-0016 JAPAN
TEL: +81-3-3834-0711/FAX: +81-3-3835-8917
URL: <http://www.happy-ind.co.jp>
E-Mail: emb-info@happy-ind.co.jp

Distributed by:

 **HAPPY Industrial Corporation**
[JAPAN]



MODEL:HCR2-1508-45
10.4" Control Panel (Option)

HCR2 SERIES

MADE IN JAPAN

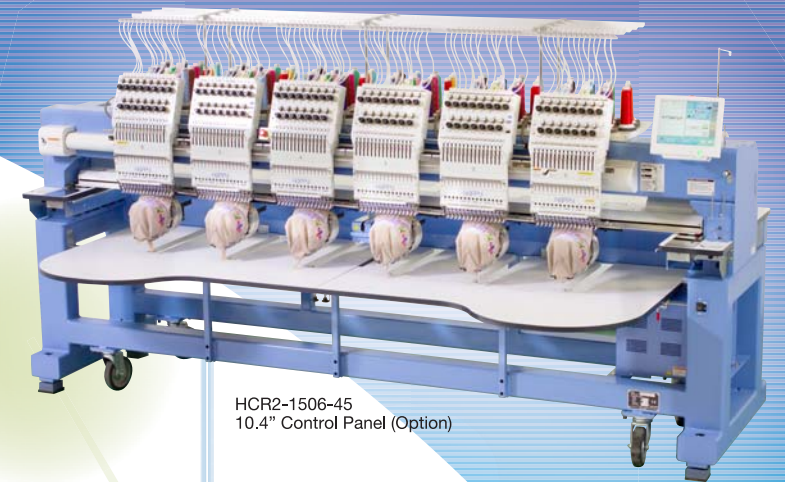


HCR2-1504-45

FREE communication softwares are included!

HAPPY LINK: Direct connection with PC and machine for design transfer

HAPPY LAN: One PC can control multiple and different type of machines(up to 254 machines)



HCR2-1506-45
10.4" Control Panel (Option)

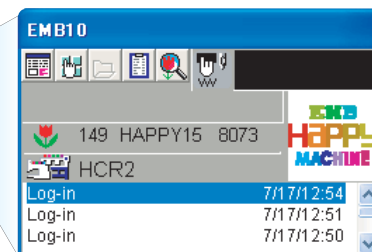


HCR2-1502-45



HUB

HAPPY LAN Monitoring Window



HCD2-1501-40



HCS2-1201-30

Color LCD Touch Screen Control Panel



7" Newly Designed color LCD touch screen control panel makes operatability easier and faster.

A stylus is equipped as standard, and USB mouse for PC Can be used.

10.4" screen is also available as option for better visibility and operatability.



Front LED Light



A bright LED light illuminates the work area bright.

Narrow Cylinder Arm



Reducing dimension of cylinder arm improves ability to embroider on difficult area, like pocket, sleeve, legs, children's wear ...

Thread Control System



The thread break sensor and the thread tension control unit are combined which gives more stability to the upper thread control.

The independent thread take-up spring improves the quality of sewing.

Standard Features and Functions

- Color LCD Touch Screen Control Panel
- Happy Link/LAN Software
- Automatic Color Change
- USB/LAN Port for PC Connection
- USB Port for USB Memory key/Mouse
- Frame Offset Function
- Auto Origin Function
- Built-in Help Function
- Frame Trace Function
- Automatic Short Stitch Removal
- Icon Free Positioning
- Multilingual Operation
- Low Noise Operation
- Compact Body Size